

ROLLER SHADES WITH FASCIA VALANCE INSTALLATION GUIDE



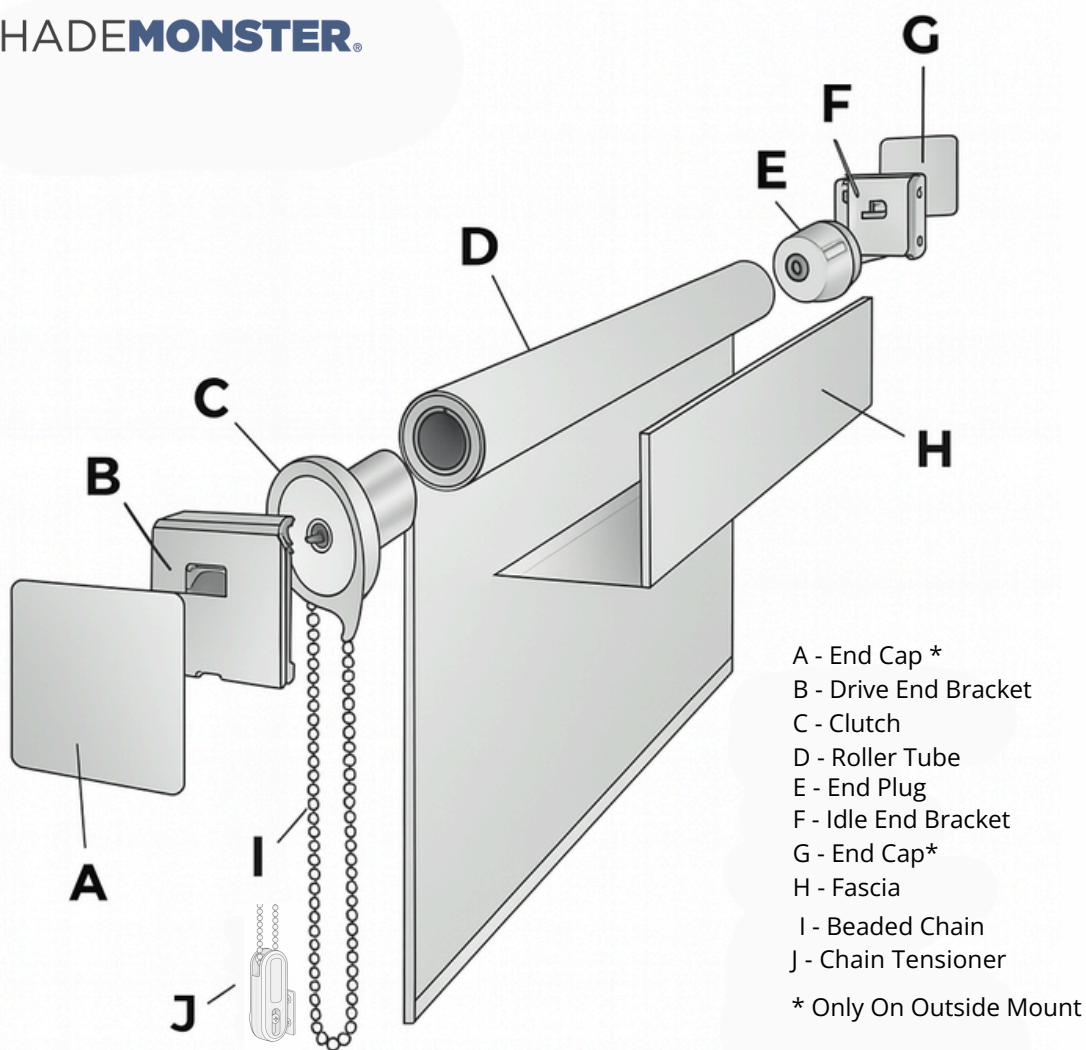
NO FEAR WE'RE HERE

ShadeMonster Window Treatments is here to help you every step of the way. Please follow our step by step guide to install your window treatments with ease.

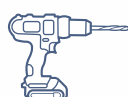
Installation Instructions

Note: It is best to read through the installation instruction completely prior to beginning your installation.

ROLLER SHADES WITH VALANCE PARTS



TOOLS THAT YOU WILL NEED



Cordless Drill



Tape Measure



Pencil

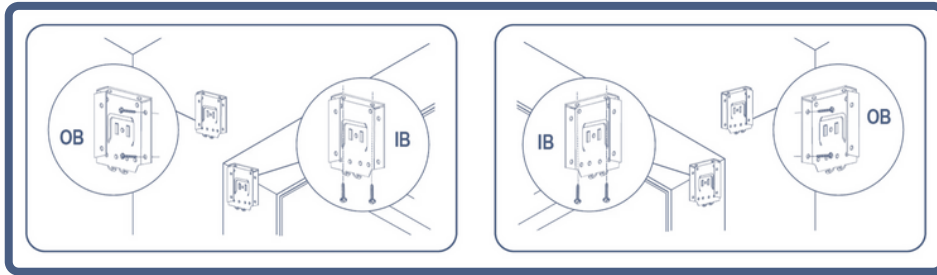


Step stool or ladder

Installation Steps

Important: Ensure the installation surface is completely level. Align all brackets in a straight, even line so the shade can move smoothly. If any bracket sits low, insert thin shims beneath it until every bracket is exactly level.

1. INSTALL THE BRACKETS



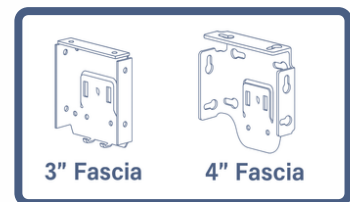
Inside Mount (IB):

Secure each bracket using two screws, either drive them in from the side or from above. Verify that every bracket sits perfectly level and in a straight line.

Outside Mount (OB):

Fasten each bracket with two screws. Confirm all brackets are level, and ensure the mounting surface is at least 1¼" tall.

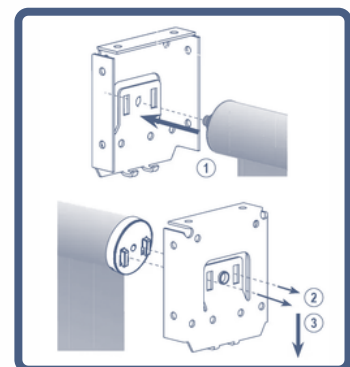
Note: Please note that the 3" fascia requires its own specific bracket, different from the one used for the 4" fascia, to ensure optimal performance.



2. INSERT SHADE INTO THE BRACKET

Important: Review the AgileLift section before beginning your AgileLift shade installation.

1. Seat the spring-loaded pin: Insert the pin end into the round opening on the bracket.
2. Engage the motor hooks: With the pin end held in place, align the two hooks on the motor head with the bracket's slots and push them straight in.
3. Lock into position: Once both hooks are through, pull the motor head gently downward until they click securely onto the bracket. The motor head should hang perfectly vertical.



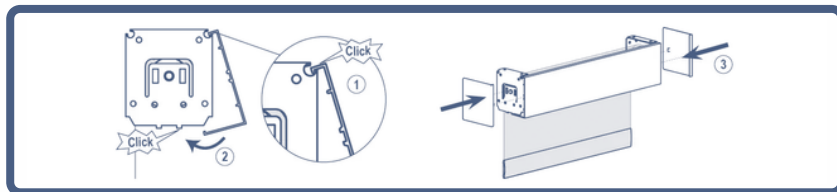
Installation Steps

3. TEST THE OPERATION

Once the roller shade (D) is secured into place, test the operation of the shade or blinds with the brackets, making sure they are level.

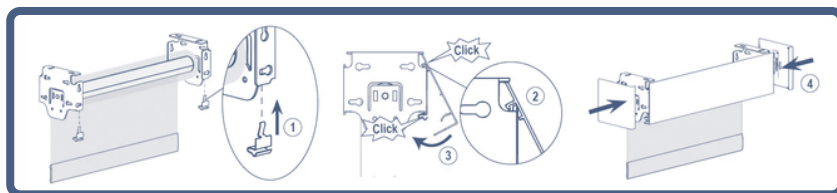
4. CLIP FASCIA ONTO ROLLER TUBE

3" Fascia



Begin by seating the fascia's top ridge into the front upper channel of each bracket, then swing the bottom forward and down until the rear lower edge snaps into place, and finish off by clipping on the bracket covers.

4" Fascia



First, secure each fascia clip onto its bracket as shown, then hook the fascia's top ridge into the front upper channel of all brackets, pivot the bottom edge forward and down until its rear lip snaps into the clip, and finish by snapping the bracket covers into place.

5. INSTALL THE CHAIN TENSIONER

Lastly, install the chain tensioner (J) to the inside of your window frame. Loop the beaded chain (I) through the opening of the tensioner to ensure that the chain is fastened.



ENJOY YOUR NEW WINDOW TREATMENTS

Still need help? ShadeMonster can guide you through the process and answer any questions during installation. Set up a live chat and/or watch our installation videos to see how it's done.

Roller Shades Care

Vinyl and PVC Roller Shades

For a light dusting, use a feather duster or the brush attachment on a vacuum. Use mild soap and water on a damp cloth to wipe them down. Rinse thoroughly after cleaning and let them air dry.

Need something stronger than soap and water?

Before using other cleaners, test them in a small area to make sure they won't damage or leave spots or marks on your shades. Avoid strong cleaners and disinfectants, especially those containing quaternary ammonium compounds and phenols.

Fabric Roller Shades

Fabric roller shades should only be dusted, do not clean them with water.

CAUTION

Dangling window cords are dangerous to children and pets and are considered a strangulation hazard. If you have small children, you should ideally only use cordless window treatments. The Window Covering Safety Council recommends ONLY cordless window treatments in homes with small children. If your home has old window treatments, consider replacing them with safer options. Be absolutely certain that all window treatments are installed correctly, even cordless options. Children and pets may be able to reach lower areas of a window treatment and improperly installed or fastened blinds or shades could fall and seriously injure an adult or child.

