

Corded 2" Faux Wood Blinds Instructions



NO FEAR WE'RE HERE

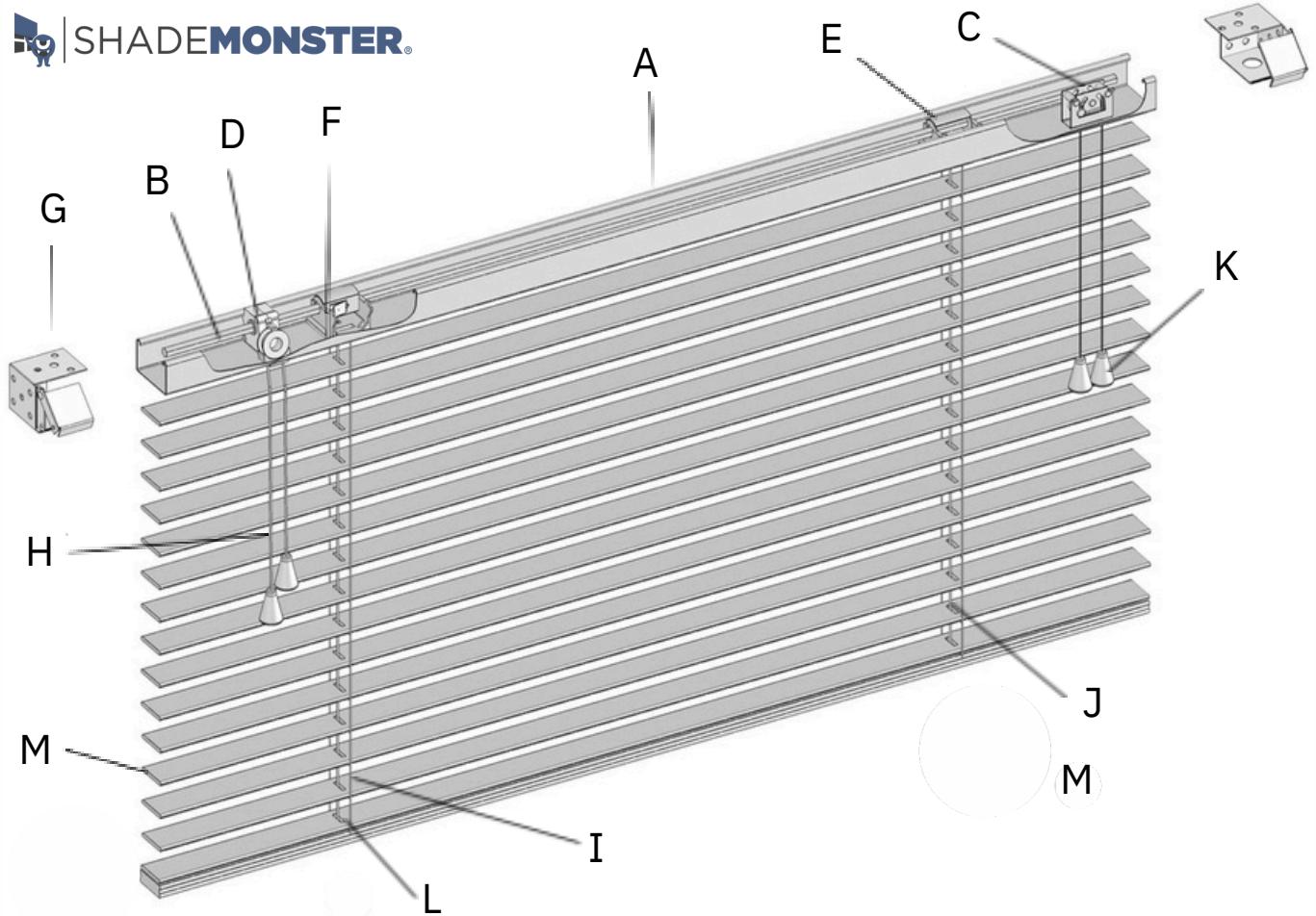
ShadeMonster Window Treatments is here to help you every step of the way. Please follow our step by step guide to install your window treatments with ease.



Installation Instructions

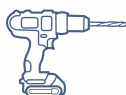
Note: It is best to read through the installation instruction completely prior to beginning your installation.

CORDED 2" FAUX WOOD BLINDS PARTS



- | | |
|---------------------------|---------------------|
| A - Headrail | H - Tilting Cord |
| B - Pinion Rod (Tilt Rod) | I - Cord Ladder |
| C - Cord Lock | J - Lift Cord 1.4mm |
| D - Cord Tilter | K - Cord Tassels |
| E - Tape Drum | L - Bottomrail |
| F - Tape Drum Support | M - 2" Slats |
| G - Installation Bracket | |

TOOLS THAT YOU WILL NEED



Cordless Drill



Tape Measure



Pencil

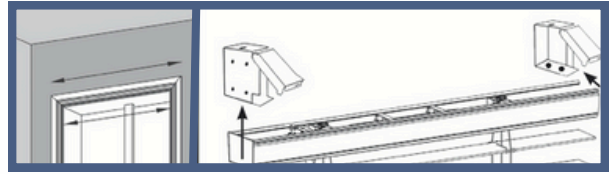


Step stool or ladder

Installation Steps

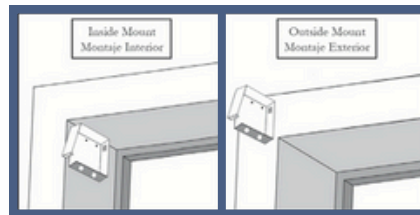
1.DETERMINE BLIND POSITION

Mark the bracket positions depending on if you ordered inside or outside mount



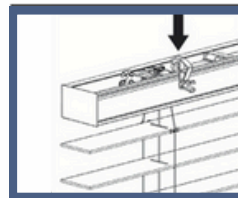
2. INSTALL MOUNTING BRACKETS

Install mounting brackets using screws included in component package.



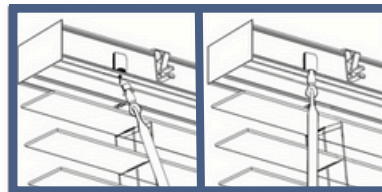
3. ATTACH VALANCE CLIPS

Attach valance clips to headrail.



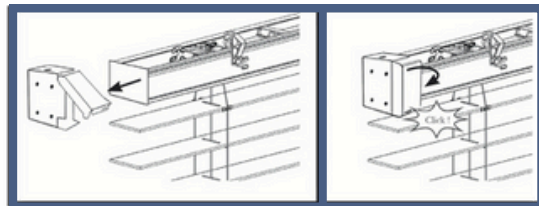
4. INSERT WAND HOOK

Insert wand hook into the tilter as shown below.



5. MOUNT YOUR BLIND

Mount your blind by inserting the headrail ends into the open mounting brackets.



ENJOY YOUR NEW WINDOW TREATMENTS

Still need help? ShadeMonster can guide you through the process and answer any questions during installation. Set up a live chat and/or watch our installation videos to see how it's done.