

How To Program: M35 M45 Hardwired

Please Read and Follow These Instructions.

Please use the motor programming instructions provided here.

Please read installation instructions and programming instructions completely prior to proceeding with installation and programming. Failure to do so can result in damage to the motor and or the shade.

Be prepared to stop the shade during programming. The shade will move continuously during some of the steps. You will need to be prepared to stop the motor using the remote control. Failure to stop the shade can result in shade or motor damage.

Only apply power to the motor being programmed regardless if the other motors have been programmed or not. This will prevent inadvertent interaction with other motors. This is not possible for motors with built-in batteries. Motors with built-in batteries must be put to sleep.

We recommend mapping out the installation before proceeding. This will reduce set-up time and make life easier. Decide the channels and or additional remotes to be assigned to each shade in the installation. Each shade should be completely programmed before moving to the next. Have the necessary remotes and controls ready prior to proceeding.

All motors programmed to the same RF channel will operate at the same time. If you want individual control of the motor, you must use separate channels on multi-channel remotes or separate single channel remotes

The remote controls are generally considered to be dummy devices as they do not store any motor or programming information. The motors are the intelligent devices. The motors store the shade operation limits in their memory and the motors also memorize the specific remotes or channels assigned to control them. Each motor can have up to 20 remote control channels controlling them.

Program Button Locations

Motor Head – The program button on the motor head is typically located opposite the antenna. There are 2 buttons on the AM35 motor head. The program button is labelled with a symbol that looks similar to ((●)).

AC123 Remote Control (Hand Held Remote with physical buttons) – The program button is located in a hole on the back of the remote control. Use a paper clip to press the button.

AC140 Remote Control (Hand Held Touch Sensitive Remote) – Remove the battery cover from the back of the remote control. The program button is the button label as “Set”.

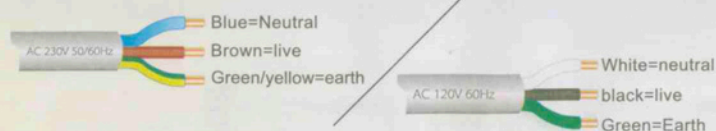
AC135 Remote Control (Wall Switch) – Remove the battery cover from the back of the remote control. The program button is located on the lower left in a hole and is labelled as “Learn”. Use a paper clip to press the button.

I. Main features

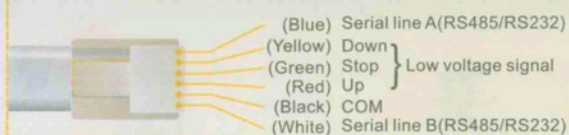
- With RS232/RS485 communication interface for integrative control
- With Dry contact switch control
- Electronic limits setting by remote, easy for installation
- Multiple limits preset, beside ends limits, 4 more middle limits for optional
- Keep the limits when the power off
- Self-checking and correcting of brake offset
- Stop on block for security
- Famous quality components to ensure reliable performance



Motor Cable



PS: 6 pin signal wires arrangement(customized only)



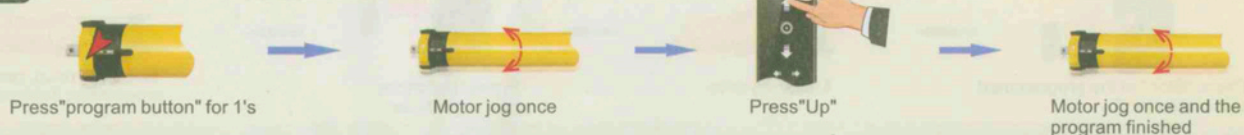
II. Operation

1. Programming

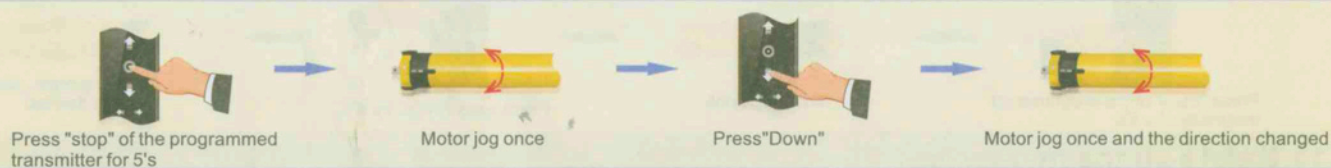
Method 1



Method 2

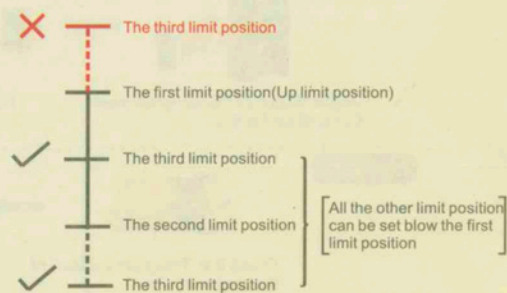


2. Change direction

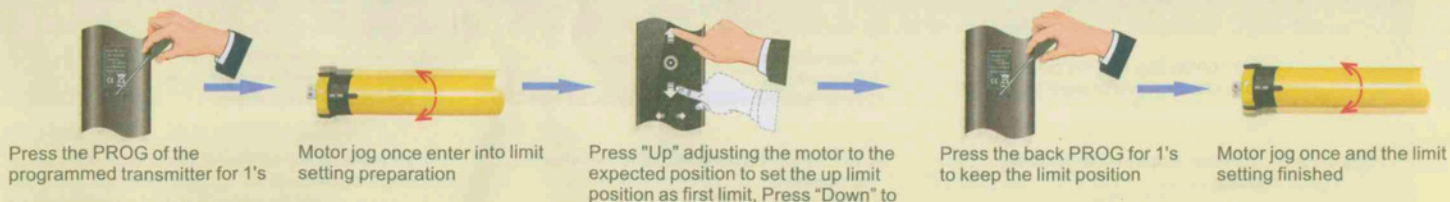


3. Limit position setting

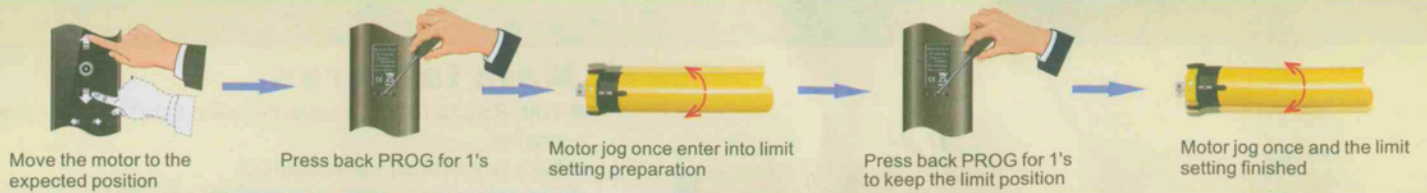
- Maximum six different limit positions can be set, the furthest two positions called the UP and DOWN limit position, others called the middle limit positions;
- When the first limit position is the UP limit position(as right illustration),all other limit positions can only be set below this position; the same thing, when the first limit position is the DOWN limit position, all other limit positions can only be set above this position;
- Every limit position can be fine-tuned or deleted separately(The first limit position can only be fine-tuned but can't be deleted separately. It can be deleted when delete all memories);
- The motor stops at the next limit position after accepting once UP/DOWN order. When it reaches the UP limit position, the UP order is no use any more; when it reaches the DOWN limit position, the DOWN order is no use;
- Press the UP/DOWN button twice on the transmitter at the speed of once a second,motor will go directly to the UP/DOWN limit position without any stop at the middle limit



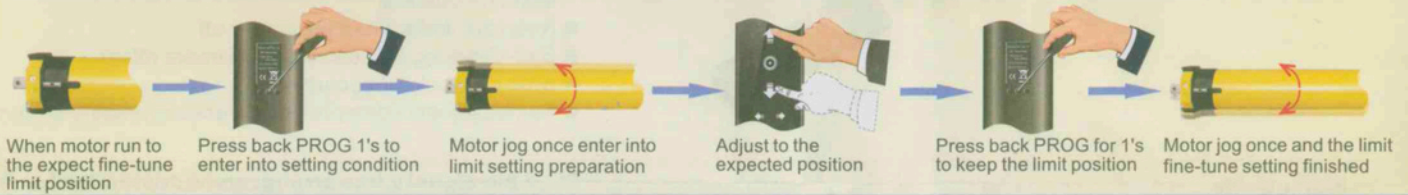
4. First limit position setting (If there's no any action within 30's , the motor will exit from limit position preparation automatically)



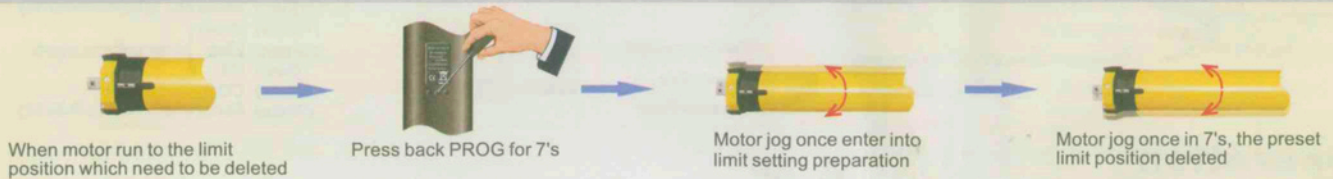
5. Other limit position setting * (If there's no any action within 30's, the motor will exit from limit position preparation automatically)



6. Limit position fine-tuning * (If there's no any action within 30's, the motor will exit from limit position preparation automatically)



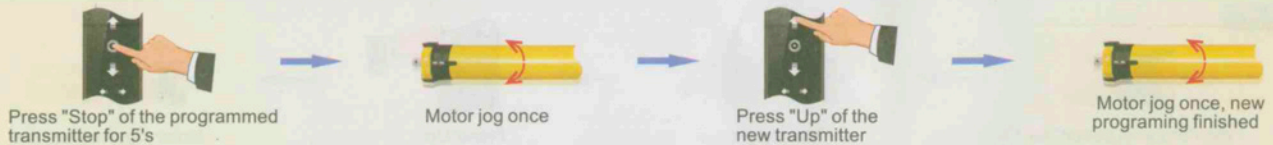
7. Delete the limit position * (The first limit position can't be delete)



8. Dot move and continuous move conversion



9. Add the new transmitter



10. Delete single channel memory

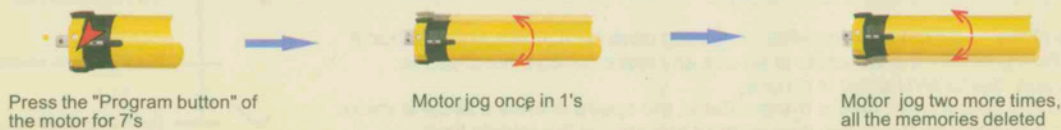


11. Delete all the memories

Method 1



Method 2



III. Trouble Shooting

Items	Problem	Matter	Shooting
1	After connecting with the power, the motor doesn't work or work slowly	A.Connected with wrong voltage B.Over loading C.Incorrect installation leads to motor stucking	A.Change to matched voltage B.Choose suitable motor torque C.Check the components
2	The motor stops suddenly during woring	A.The motor has been exceeded overheating protection, B.Power was cut off	A.After the motor with natural cooling, it will come back to work again B.The motor will come back to work once power on