

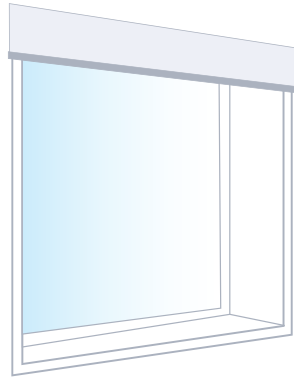
How To Pair Your Remote with Somfy Hardwired Shades

Please Read and Follow These Instructions.

STEP 1 - Plug in your motor

Make sure your motor is plugged into power and your power is turned ON.

For multiple roller blinds including double and linked blinds, add one blind at a time to your remote by following steps 1 to 10. You'll need to make sure every other blind is turned OFF at the power, except for the blind you're setting up. Once you've added every blind to your remote, you can group them.

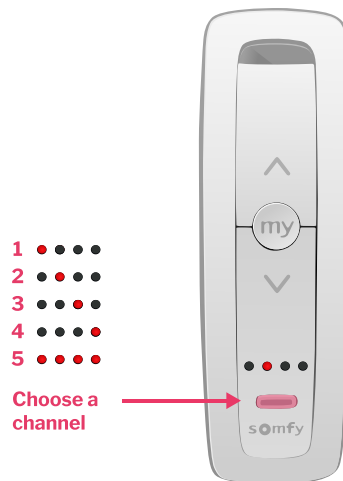


Only plug one blind into power at a time

STEP 2 - Pick your channel

For 5 channel remotes click the channel button at the bottom of your remote, to choose which channel will control your blind. The red light displays which channel you're on.

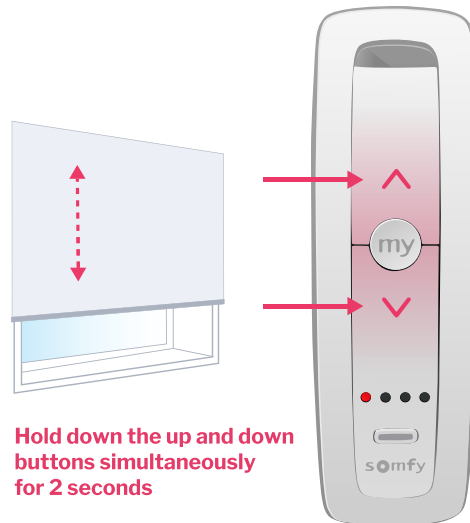
For 1 channel remotes, you can skip this step.



How To Pair Your Remote with Somfy Hardwired Shades

STEP 3 - Assign the blind to the channel

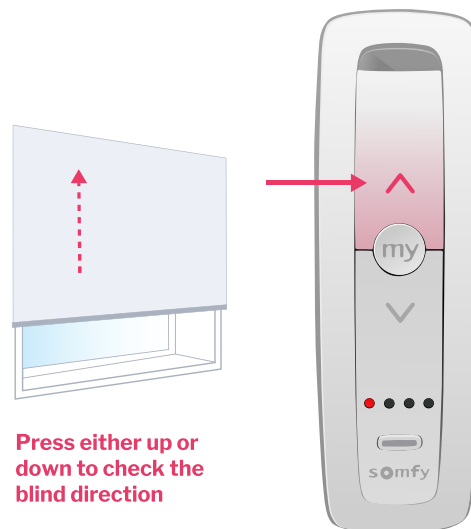
Hold down the up and down buttons simultaneously for 2 seconds. Your blind will jog up and down, once your blind has been assigned to the channel.



STEP 4 - Check your roll direction

Press either the up or down button on your remote and check that your blinds roll in the right direction.

If your roll direction is wrong, hold down the my button for 2 seconds and your blinds will jog up and down. Check again and your blinds should roll in the right direction now.

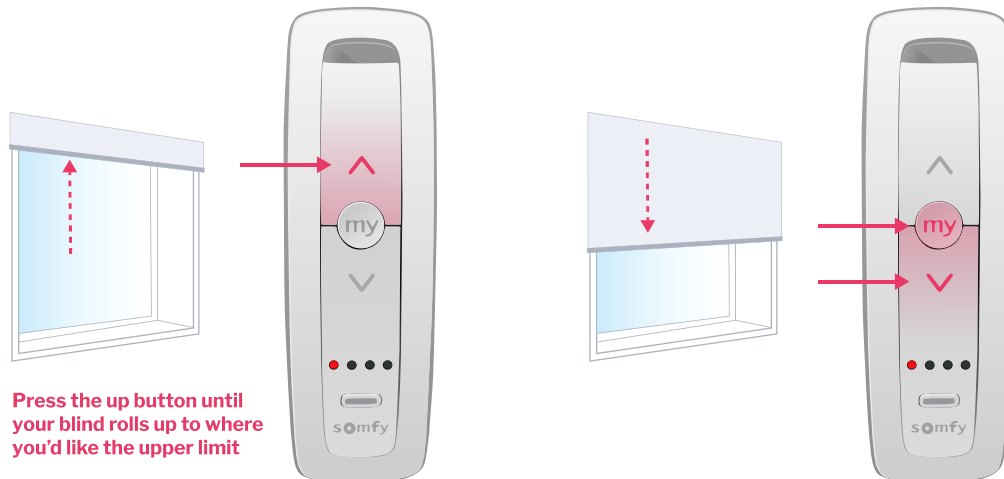


How To Pair Your Remote with Somfy Hardwired Shades

STEP 5 - Set your blinds upper limit

Press the up button until your blind rolls all the way up, to where you'd like the upper limit. If you go slightly too far, just press the down button to nudge your blind down.

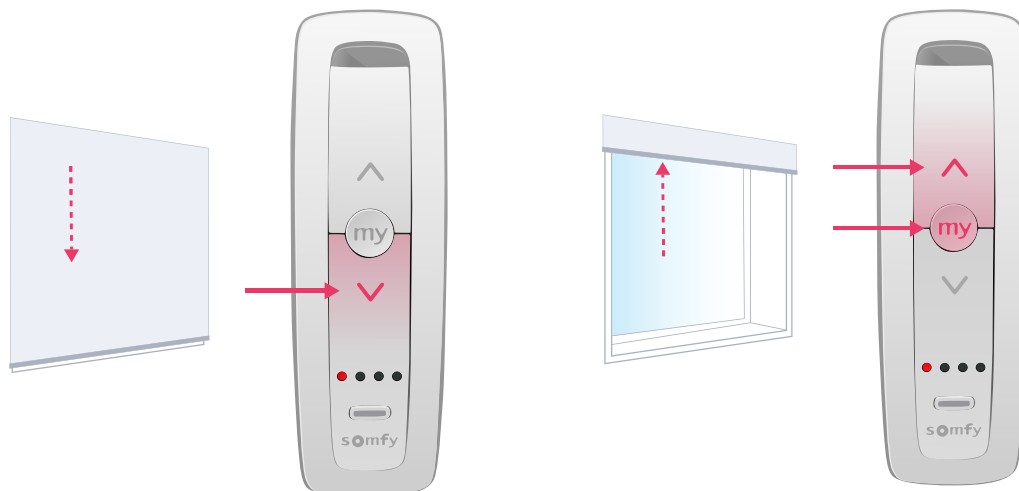
Hold down the my and down buttons simultaneously and your blind will start to run downwards automatically, then release the buttons and press the my button to stop the blind before it reaches the bottom.



STEP 6 - Set your blinds lower limit

Press the down button until your blind rolls all the way down, to where you'd like the lower limit. Remember if you go slightly too far, just press the up button to nudge your blind back up.

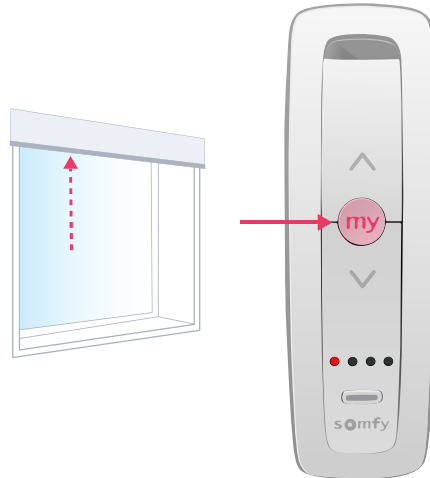
Hold down the my and up buttons simultaneously and your blind will run all the way up to your upper limit.



How To Pair Your Remote with Somfy Hardwired Shades

STEP 7 - Confirm your end limits

Hold down the my button for 2 seconds until the blind jogs. The control now has your upper and lower limits memorized.



STEP 8 - Finish your remote setup

Grab a paperclip or pin and press the program button on the back of the remote for **less than a second**, which will make your blinds jog.

If your blind doesn't jog, try again by only **tapping** the button (pressing and holding the program button won't be successful). Ensure the blind jogs to complete setup.

You're all set to start using your Somfy remote! Use the up and down buttons to control your blind and the my button to stop your blind moving.

To set up your remote for multiple blinds including double and linked blinds, remember to follow steps 1 to 10 for each additional blind motor, one by one. Then **group them** by following the steps in the Grouping your blinds tab of this guide.

